



sagiper
EST 1994

NORTH AMERICA

ARCHITECTURAL PRODUCTS



SAGIWALL™
FR SIDING

SAGIBOND™
ACM PANEL

SAGIREU™
SOFFIT | CEILING

SAGIBATTEN™
BATTENS

SAGISCREEN™
RAILING | PRIVACY

INVEST IN CURB APPEAL™

ABOUT US

The pioneers in dual wall heavy gauge Fire Rated High Performance Polymer Siding (FR-HPPS), Soffit and Ceilings. Celebrating 30 years in manufacturing.

Born in 1994. SAGIPER emerged into the European market and revolutionized the construction and renovation industry by becoming the pioneer of Fire Rated High Performance Polymer Siding (FR-HPPS), soffit and ceiling product lines. Since then, SAGIPER has continued its relentless pursuit in maintaining and developing its products to provide aesthetically pleasing maintenance free and modern finishing solutions for all its end users around the world.

Our Architectural Building Products are tailored for a wide range of building applications, from contemporary residential homes and commercial office spaces to educational facilities, healthcare institutions, sports complexes, and hospitality venues. Featuring the natural look of wood and sleek metallic finishes, these materials are ideal for architects who seek to specify durable and visually appealing exterior materials for varied architectural projects.

VISION

Sagiper Portugal and Sagiper North America maintain intrinsic ties that are deeply rooted in family values and mirrored in our everyday business operation. Our vision is to become an internationally recognized and trusted manufacturer of quality building materials with a reputation of integrity, honesty and first-class service to all professional levels in the buildings supply chain.

MISSION

Delivering Timeless Building Solutions by People Who Care



Welcome to the Future of Architectural Building Products

Introducing Our Latest Innovations:
SAGIBOND™, SAGIBATTEN™, SAGISCREEN™
SAGIWALL™ and SAGIREU™.

In the ever-evolving world of architectural design, the need for materials that combine aesthetics with functionality is paramount. Our product lines are crafted to meet this demand, offering solutions that are as practical as they are visually stunning.



OUR MARKETS

CANADA HQ
(EDMONTON, AB)

MANUFACTURING PLANT
(VAGOS, PORTUGAL)

USA HQ
(TAMPA, FL)

PRODUCTION AND SUPPLY

Superior Building Products. Unparalleled Service.

To continually guarantee the quality of its products and fulfill the commitments it makes with its clients, SAGIPER production is active 24 hours per day.

The facility relies on our family of employees, working on three shifts to maintain a continuous production of 5 to 7 days per week for the company's various product lines: SAGIWALL™, SAGIREV™, SAGIBATTEN™, SAGIBOND™, and SAGISCREEN™.

SAGIPER's North American distribution centers carry over half-a-million square feet of finished product strategically located to best service the North American market, with a wide variety of colors and profiles ready to ship within 48 hours.

TESTING AND CERTIFICATIONS

Sagiper North America holds itself to the highest of quality standards in the market. Our products go through rigorous quality assurance and performance testing to ensure it meets the wide variety of North American certification requirements.

Visit our website for the most up to date testing and certification data.



SAGIWALL™

Elevate Your Project with Modern and Stylish Fire Rated High Performance Polymer Siding (FR-HPPS)

SAGIWALL™ provides quality siding solutions for all types of building structures- from your family home to large scale commercial projects.

SAGIWALL™ has been specifically designed for exterior use providing various solutions which fulfill the most demanding requirements of the architectural and construction sectors.

Available in two profiles: SAGIWALL™ Channeled with 1 cm of separation and SAGIWALL V-Groove with a 4mm separation. Panels and trims come in standard 12ft and 19ft lengths.

A variety of realistic wood tones, RAL'S (European Color Chart) and metallic finishes providing a wide range of aesthetic alternatives from classic to contemporary and rustic to urban.



U-GROOVE



CHANNELED



PRODUCT PAGE



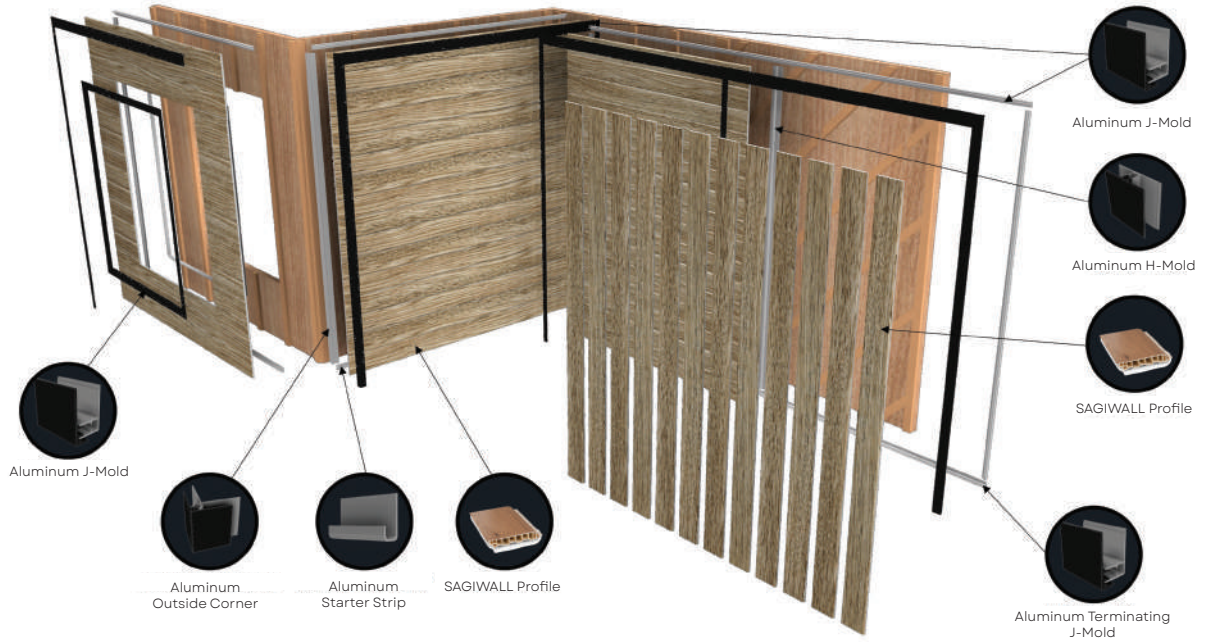
REF 9



REF 11



REF 82



ADVANTAGES

Crafted meticulously for exterior applications, SAGIWALL siding offers a multitude of benefits:

- Easy installation
- Maintenance Free
- Resistant to humidity and temperature variations, even in the most adverse weather conditions
- Resistant to ultraviolet (UV) rays
- Minimal expansion/contraction
- Thermal Rating of 2.41
- 50-year (15 year non-prorated) warranty
- Impervious to water/molds. Perfect for coastal applications with exposure to sea spray
- Impenetrable to insects
- Impact resistance and scratch resistance
- Fire rated for North America (NFPA 285 & CAN/UL S134)
- CCMC Certification 14043-R
- Approved for Non-combustible buildings
- Standard 12ft and 19ft lengths (custom lengths available)
- TAS 202 & 203 Passed
- Florida Product Approval 28044 (HVHZ Approved)
- Texas Department of Insurance EC-153
- ICC-ES Evaluation Report ESR-4876

SAGIREV™

Elevate Your Space: Authentic Wood-Look Panels for Elegant Living!

The timeless solution for Soffit, interior ceilings and interior walls. SAGIREV™ has been specifically designed for interior and exterior use, providing various solutions which fulfill the most demanding requirements of the architectural and construction sectors.

Available in three profiles: 4" V-groove, 6" V-groove and 8" Flat. Panels and trims come in standard 12ft and 19ft lengths.

A variety of realistic wood tones, RAL'S (European Color Chart) and metallic finishes providing a wide range of aesthetic alternatives from classic to contemporary and rustic to urban.



REF 84



Scan the QR code
for detailed product info
and components





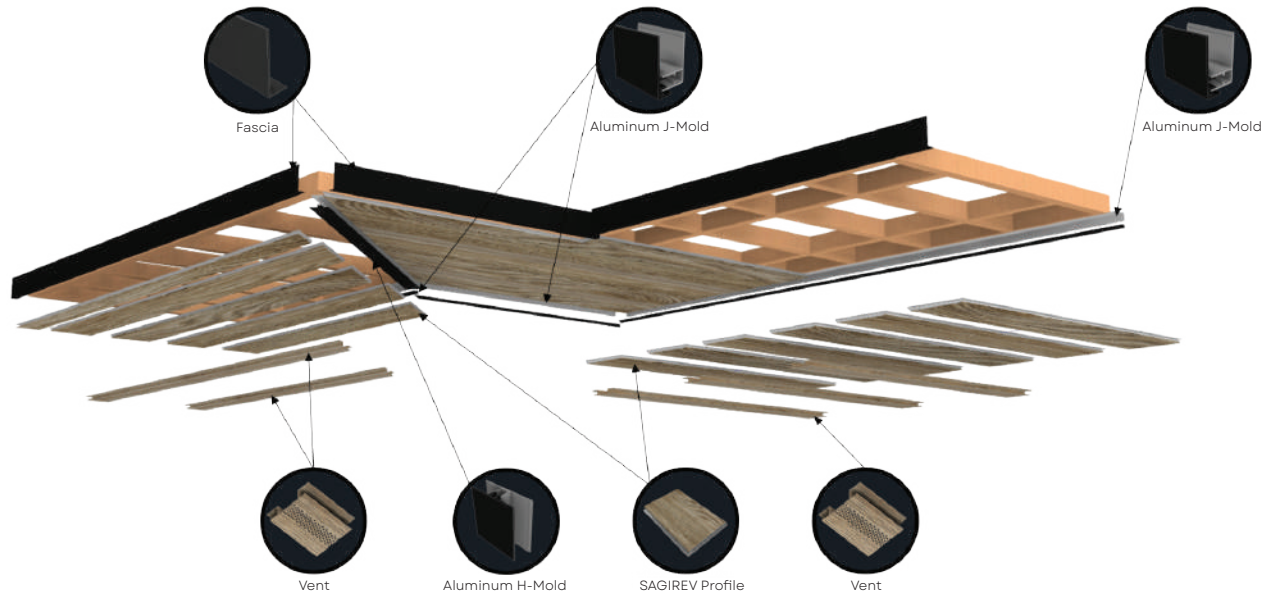
REF 8



REF 11



REF 83



ADVANTAGES

Exquisitely designed for both exterior and interior applications, SAGIREV delivers an array of unparalleled benefits:

- Easy installation
- Maintenance Free
- Resistant to humidity and temperature variations, even in the most adverse weather conditions
- Resistant to ultraviolet (UV) rays
- Minimal expansion contraction
- 50-year (15 year non-prorated) warranty
- Impervious to water molds. Perfect for coastal applications with exposure to sea spray
- Impenetrable to insects
- Impact and scratch resistant
- Fire rated for North America (Class A)
- Standard 12ft and 19ft lengths (custom lengths available)
- Lifetime warranty on interior use
- Florida Product Approval 41603

SAGIBOND™

SAGIBOND™: Transforming Facades into Masterpieces

Welcome to SAGIBOND™, where innovation meets elegance in our state-of-the-art architectural ACM Panels, exquisitely finished with authentic woodgrain textures.

Discover the ultimate fusion of visual allure and unmatched resilience, designed to elevate building facades to architectural masterpieces.

Our collection presents three unique choices, each tailored to unleash limitless creativity and transform your architectural projects:

- SAGIBOND™ Fireguard
- SAGIBOND™ Hexacore
- SAGIBOND™ Slimshield NC



SAGIBOND & BATTEN

Achieve the classic Board & Batten or a sleek and modern Standing Seam panel aesthetic with our all new SAGIBOND™ and U-Batten combination. Ask your sales rep for more information!

ACM
ALUMINUM COMPOSITE
MATERIAL TECHNOLOGY



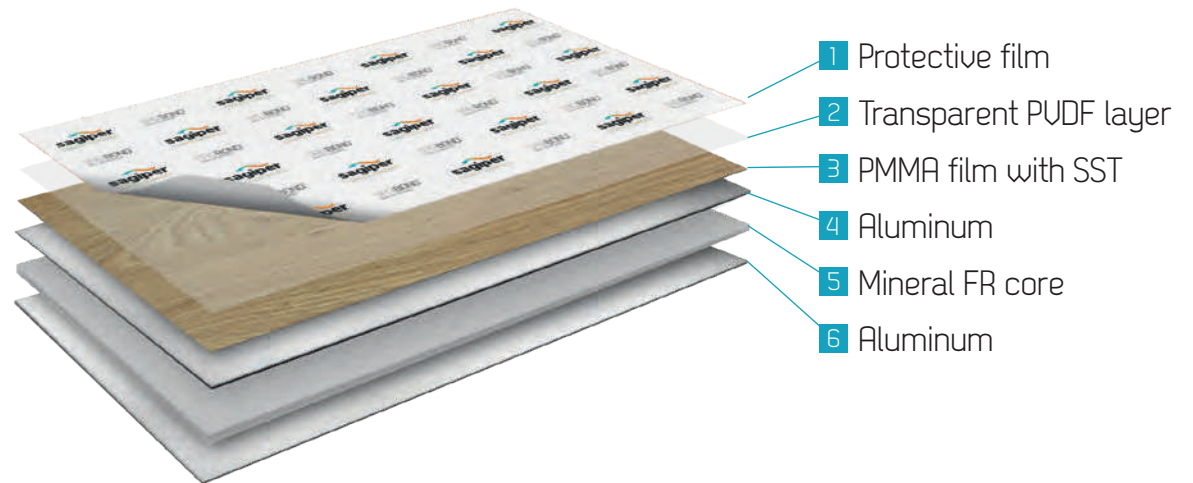
Scan the QR code
for detailed product
info and components





SAGIBOND™ FIREGUARD

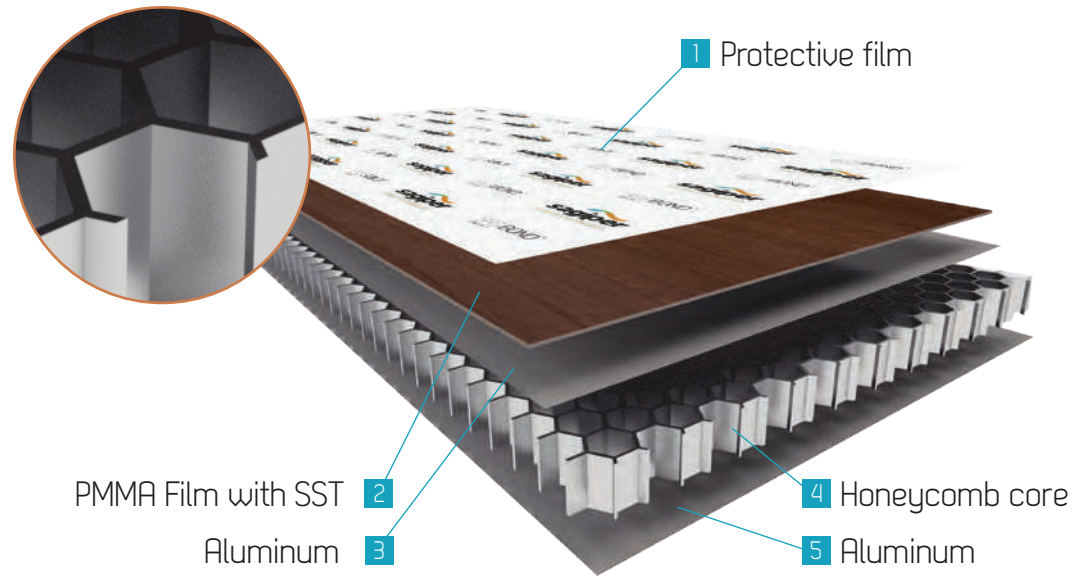
Our advanced composite panel, featuring two aluminum layers adhered to a fire-rated core. Standardized at 4mm thickness and cloaked in our true-to-life wood grain film.



Panel Size:
1250mm x 5000mm (4ft x 16ft)

SAGIBOND™ HEXACORE

Our cutting-edge aluminum honeycomb panel, meticulously enveloped in authentic woodgrain film. Tailored for architectural facades, envelopes, false ceilings, canopies, and interior cladding, Hexacore seamlessly blends strength with elegance. Available in two thickness options - 6mm and 14mm - it offers versatile solutions to bring your architectural visions to life.



Panel Size:

1250mm x 5000mm (4ft x 16ft)

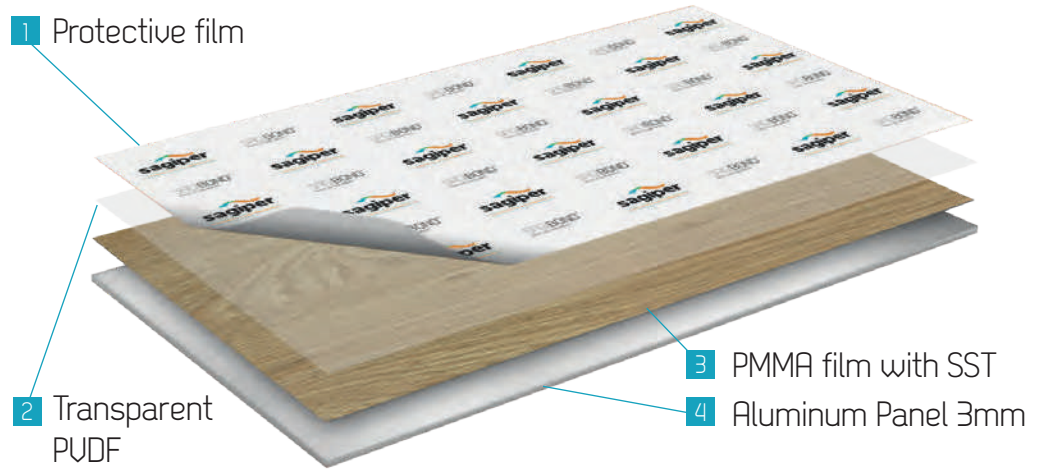


SAGIBOND™ Hexacore is designed to deliver unparalleled advantages, including:

- Exceptional lightness for easy handling and installation
- Superior insulation properties for enhanced energy efficiency
- Outstanding rigidity, ensuring structural integrity
- Impressive comprehensive strength for durability
- Environmentally friendly with 100% recyclability
- Simplified machining for effortless customization and fitting

SAGIBOND™ SLIMSHIELD NC

Our premium solid aluminum 3 mm panel, elegantly encased in authentic woodgrain films. This innovative product provides a non-combustible solution, elevating the safety and aesthetic of your upcoming architectural endeavors.



Panel Size:

1250mm x 2000mm (4ft x 6.5ft) | 1250mm x 3000mm (4ft x 9.5ft)
1250mm x 4000mm (4ft x 13ft) | 1000mm x 2000mm (3ft x 6.5ft)



SAGIBATTEN™

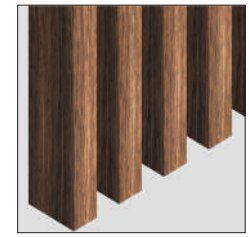
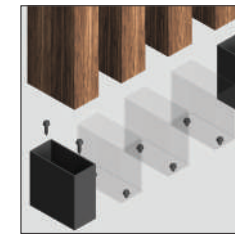
Elevate your architectural designs with the perfect blend of durability and aesthetics. SAGIBATTEN™ brings to the market a revolutionary aluminum batten system that seamlessly combines the strength and lightweight properties of aluminum with the timeless elegance of wood. Each batten is meticulously wrapped in high-quality, realistic woodgrain films, offering an unparalleled natural look without the maintenance and wear issues associated with real wood.

Batten Sizes and Components

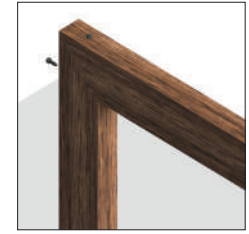
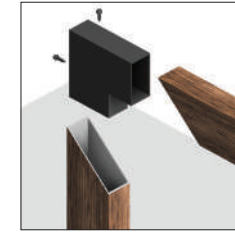


30x60mm (1x2) 30x80mm (1x3) 30x150mm (1x6) 50x50mm (2x2) 50x100mm (2x4) 50x150mm (2x6)

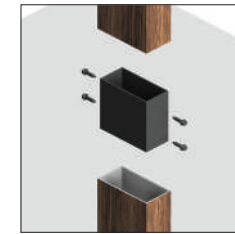
Standard Length 19'8" (6000mm)



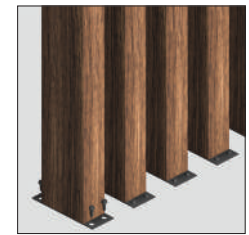
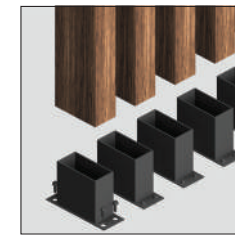
Hidden Base Plate



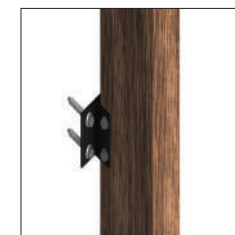
inside Corner Connector



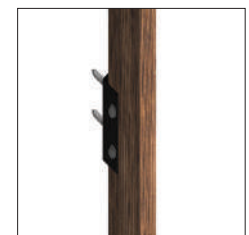
Sleeve Connector



Visible base Plate



Visible Bracket



Hidden Bracket



Why Choose SAGIBATTEN™?

- **Durability Redefined:** Crafted from premium aluminum, SAGIBATTEN™ is designed to withstand the harshest environmental conditions without succumbing to rust, decay, or warping. Enjoy the beauty of wood with the resilience of aluminum.
- **Aesthetic Versatility:** Our state-of-the-art woodgrain films are available in a wide range of textures and colors, ensuring a perfect match for every design vision. From contemporary chic to rustic charm, SAGIBATTEN™ provides the flexibility to bring any architectural concept to life.
- **Eco-friendly Innovation:** By choosing SAGIBATTEN™, you're not only opting for an aesthetically pleasing solution but also an environmentally responsible one. Our products contribute to sustainable construction practices by reducing the need for timber and offering a recyclable alternative.
- **Ease of Installation:** Engineered for simplicity and efficiency, SAGIBATTEN's lightweight design and intuitive installation system mean your projects can proceed faster, with less labor, reducing overall construction time and costs.
- **Maintenance-Free Longevity:** Say goodbye to the constant upkeep associated with wood. SAGIBATTEN™ offers a hassle-free solution that looks great year after year, with just minimal cleaning required.

Where Can SAGIBATTEN™ Be Used?

Ideal for both interior and exterior applications, SAGIBATTEN™ is the go-to choice for architects, designers, and builders looking to incorporate wood-like elements into their projects without compromising on durability or sustainability. From striking facade systems to sophisticated interior walls, and ceilings, SAGIBATTEN™ adds a touch of warmth and elegance to any space.

SAGIBATTEN™: Where Innovation Meets Elegance.



Scan the QR code
for detailed product info
and components



SAGISCREEN™

Railing Systems and Privacy Screens

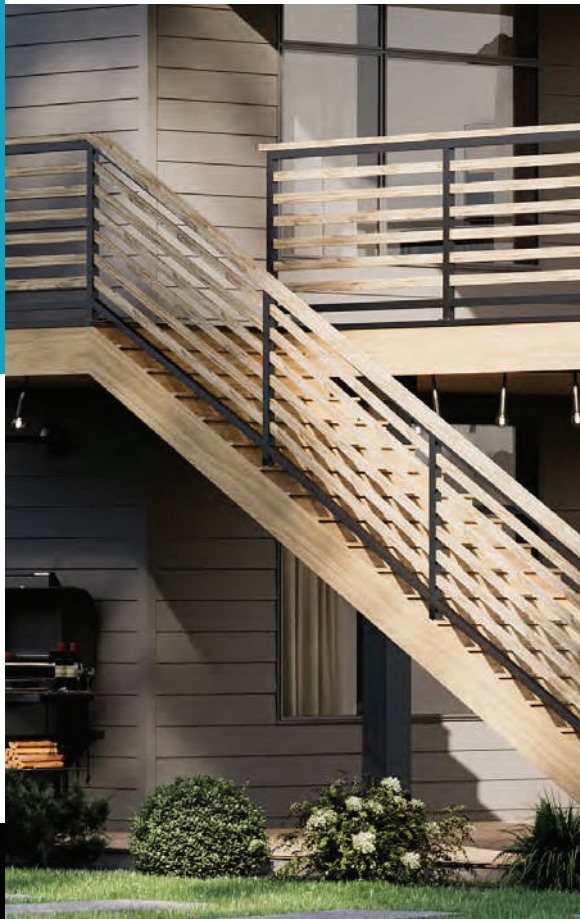
Merging the unparalleled durability of aluminum with the sophisticated appearance of natural wood, SAGISCREEN™ offers a versatile solution for railing systems and privacy screens. Designed to enhance both the functionality and aesthetics of your architectural projects, our product is expertly wrapped in realistic woodgrain films, delivering the look and feel of wood without the upkeep.



Scan the QR code
for detailed product info
and components

Why SAGISCREEN™ Stands Out

- **Aesthetic Appeal with Durability:** SAGISCREEN™ combines the beauty of natural wood with the enduring qualities of aluminum, offering a product that withstands time, weather, and wear, all while maintaining its elegant appearance.
- **Customizable Designs:** Tailor your projects with an extensive selection of woodgrain finishes that suit any style or preference. From the warm tones of traditional woods to the cool hues of contemporary designs, SAGISCREEN™ brings your creative visions to life.
- **Eco-Conscious Choice:** Embrace sustainability without compromise. SAGISCREEN™ is an environmentally friendly alternative to traditional wood, helping to conserve forests and reduce waste with its recyclable materials.
- **Simplified Installation:** Our aluminum railing systems and privacy screens are engineered for easy installation, offering a streamlined process that saves time and labor costs. The lightweight yet strong structure of SAGISCREEN™ ensures long-lasting performance with minimal maintenance.



Discover the SAGISCREEN™ Collection:

Railing Systems:

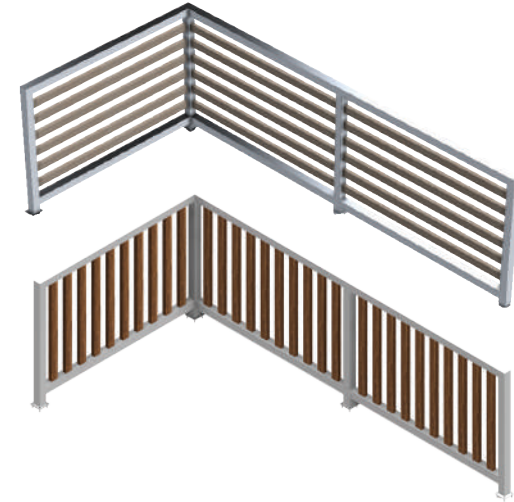
Standard Railing: The SAGISCREEN™ Railing system is elegantly designed with a standard height of 43 inches, featuring woodgrain pickets that are sparsely arranged for aesthetic appeal in both a horizontal or vertical option. Offered in 5-foot sections, these railings are constructed on-site, ensuring a perfect fit that complements a wide range of architectural styles. This system marries safety with elegance, enhancing the visual appeal of any space.

Upgrade Option: Elevate your standard railing with our optional drink rail addition, wrapped in the same authentic woodgrain finish. This practical upgrade transforms your railing into a convenient spot for resting drinks and small items, enhancing usability without compromising on style. Ideal for entertaining or simply enjoying your outdoor space, the drink rail is a stylish and functional enhancement to our standard railing.

Privacy Screens:

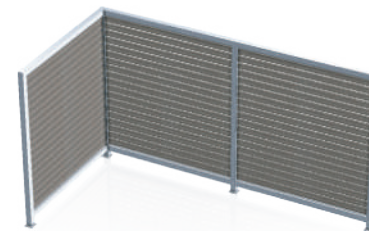
Versatile Privacy: Enhance your privacy while preserving beauty with our 6-foot tall screens. Available in 5-foot wide sections, you can select from either 3-inch or 1-inch picket spacing to craft your ideal private oasis. Our screens are designed to cater to your preferences, offering elegant options for both partial visibility and complete seclusion.

Each option within the SAGISCREEN™ collection is designed to offer unparalleled functionality and beauty, ensuring your project benefits from the distinctive quality and elegance with SAGISCREEN™.

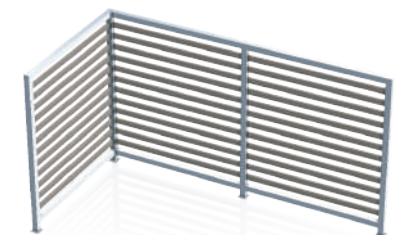


Standard Railing Option

Drink Rail Option



1 inch Spacing



3 inch Spacing





REF 92



REF 79



REF 14 & 83



REF 92



REF 82, 84, & 88



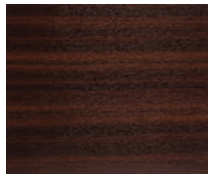
REF 92

FINISHES

Explore Our Range of Finishes: From Woodgrain and Matte to Solid Metallic and RAL



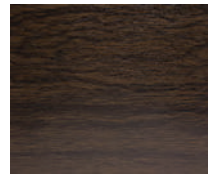
Blonde Oak
Ref 1



Port Redwood
Ref 2



Chocolate Blackwood
Ref 3



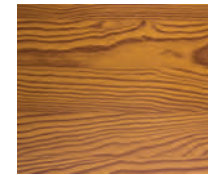
Espresso Blackwood
Ref 4



White Oak
Ref 5



Hazel Oak
Ref 6



Brazilian Redwood
Ref 7



Caramel Cedar
Ref 8



Caramel Zebrawood
Ref 9



Cherry Zebrawood
Ref 10



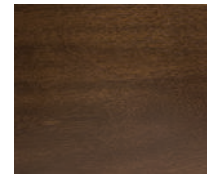
Pine Zebrawood
Ref 11



Titanium Coalwood
Ref 12



Light Maple
Ref 13



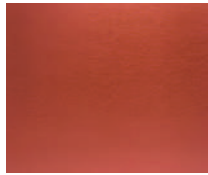
Walnut Cedar
Ref 14



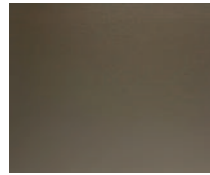
Absolute Silver
Ref 50



Absolute White
Ref 60



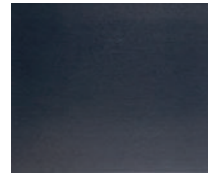
Metallic Copper
Ref 69



Ref 71



Ref 72



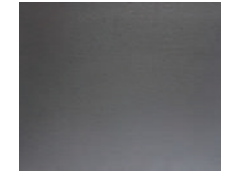
Ref 73



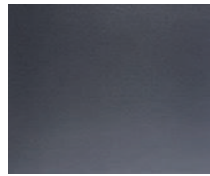
Ref 74



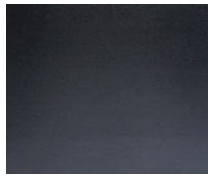
Ref 75



Ref 76



Ref 77



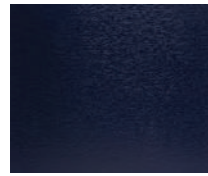
Metallic Black Ref 78



RAL 3005



RAL 3011



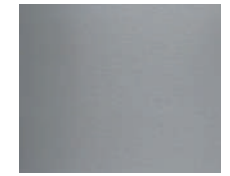
RAL 5011



RAL 6005



RAL 6009



RAL 7001



RAL 7016



RAL 7035



RAL 9001



RAL 9010

Note: Solid Powder Coated Finishes are available upon request.
Note: RAL finishes available upon request.

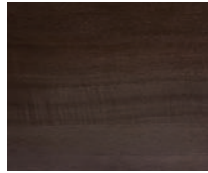
DISCLAIMER: Finishes are for references only.
Please contact our office to obtain physical samples.



Knotty Maple
Ref 79



Mocha Redwood
Ref 80



Chestnut Blackwood
Ref 81



Desert Oak
Ref 82



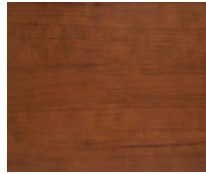
Mountain Oak
Ref 83



Monument Oak
Ref 84



Rustic Cherry
Ref 88



Soft Cherry
Ref 89

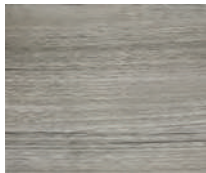


SCANDINAVIAN ELEMENTS

Nordic design roots that provide the natural look and feel of wood.



Oslo Oak
Ref 90



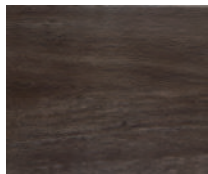
Stockholm Oak
Ref 91



Copenhagen Oak
Ref 92



Gothenburg Oak
Ref 93



Whisky Oak
Ref 94



Nutmeg Oak
Ref 95

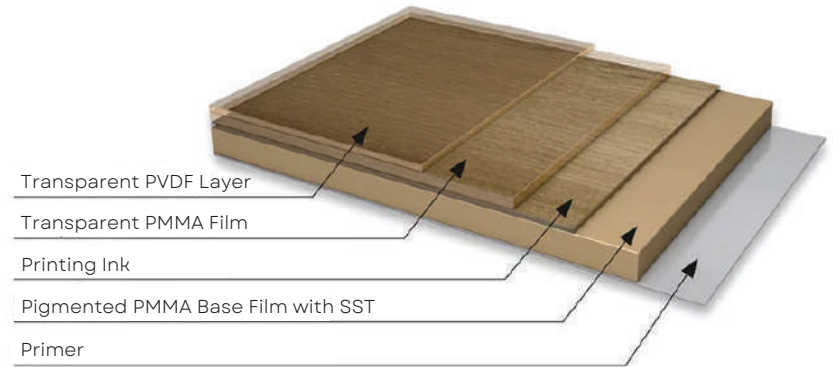


Honey Oak
Ref 97



Slate Oak
Ref 98

FILM STRUCTURE & SOLAR SHIELD TECHNOLOGY



Infrared radiation from the sun is simply reflected by SST to provide protection against excessive heat buildup resulting in cooler profiles. With SST, profiles retain their dimensional stability so that panels and trims remain secure. SST acts as a protective shield. Its reflective property safeguards the film itself, the adhesive and the profile.

SST provides protection for SAGIPER's exterior film, with dark colours and wood decors enjoying the most significant benefits. SST slows down the ageing process and prolongs the life of the PVC core and construction components.

FUN FACT

Did you know our films offer an anti graffiti coating due to its low surface tension?

Note: RAL finishes available upon request.

DISCLAIMER: Finishes are for reference only. Please contact our office to obtain physical samples.



CANADA HQ

18505 105 Ave NW,
Edmonton, AB Canada T5S 0K3


USA HQ TAMPA

201 S County Line Road
Plant City, Florida, USA 33566

Phone: 1-780-482-3445
Fax: 1-888-890-7069
TF: 1-866-SAG-IPER (724-4737)

Email: info@sagipernorthamerica.com
Website: www.sagipernorthamerica.com



-  sagiper_na
-  Sagiper North America
-  Sagiper North America
-  Sagiper North America

Scan the QR code to discover a world
of styles and designs to enhance
and elevate your creative vision.



INVEST IN CURB APPEAL™