



INVEST IN CURB APPEAL™

SAGIBOND™
SAGIBATTEN™
SAGISCREEN™

ARCHITECTURAL BUILDING PRODUCTS

Welcome to the Future of Architectural Building Products

Introducing Our Latest Innovations: SAGIBOND™, SAGIBATTEN™ and SAGISCREEN™

In the ever-evolving world of architectural design, the need for materials that combine aesthetics with functionality is paramount. Our new product lines are crafted to meet this demand, offering solutions that are as practical as they are visually stunning.





SAGIBOND™

SAGIBOND™: Transforming Facades into Masterpieces

Welcome to SAGIBOND™, where innovation meets elegance in our state-of-the-art architectural ACM Panels, exquisitely finished with authentic woodgrain textures.

Discover the ultimate fusion of visual allure and unmatched resilience, designed to elevate building facades to architectural masterpieces.

Our collection presents three unique choices, each tailored to unleash limitless creativity and transform your architectural projects:

- SAGIBOND™ Fireguard
- SAGIBOND™ Hexacore
- SAGIBOND™ Slimshield NC

SAGIBOND™: Not Just a Panel, but a Statement

ACM
ALUMINUM COMPOSITE
MATERIAL TECHNOLOGY

Discover the essential advantages of SAGIBOND™:

- Captures the natural beauty and texture of wood
- Exceptional longevity and resistance against wear
- Minimal upkeep: no need for paint, stain, or sealant
- Designed to withstand the elements without warping, rotting, or cracking
- Enhances safety with fire-resistant properties, preventing ignition and flame spread
- Eco-conscious choice, crafted from recycled materials
- Lightweight design simplifies installation
- Extensive selection of woodgrain patterns and solid finishes

SAGIBOND™ is versatile for various applications, such as:

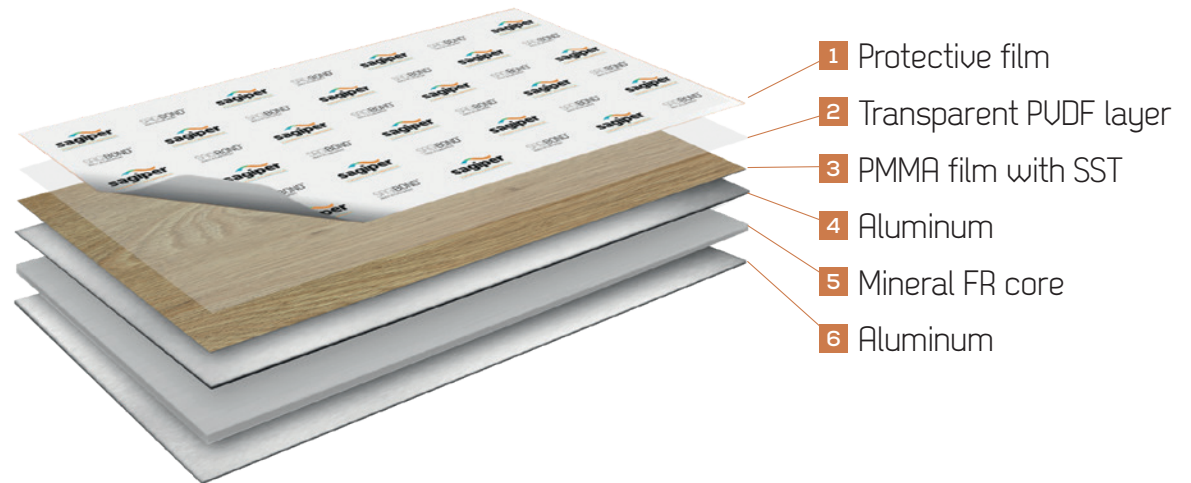
- Architectural facades and cladding
- Signage and promotional displays
- Panels for interior walls and ceilings
- Enhancements for columns and shelter structures
- Solutions for transportation and industrial projects





SAGIBOND™ FIREGUARD

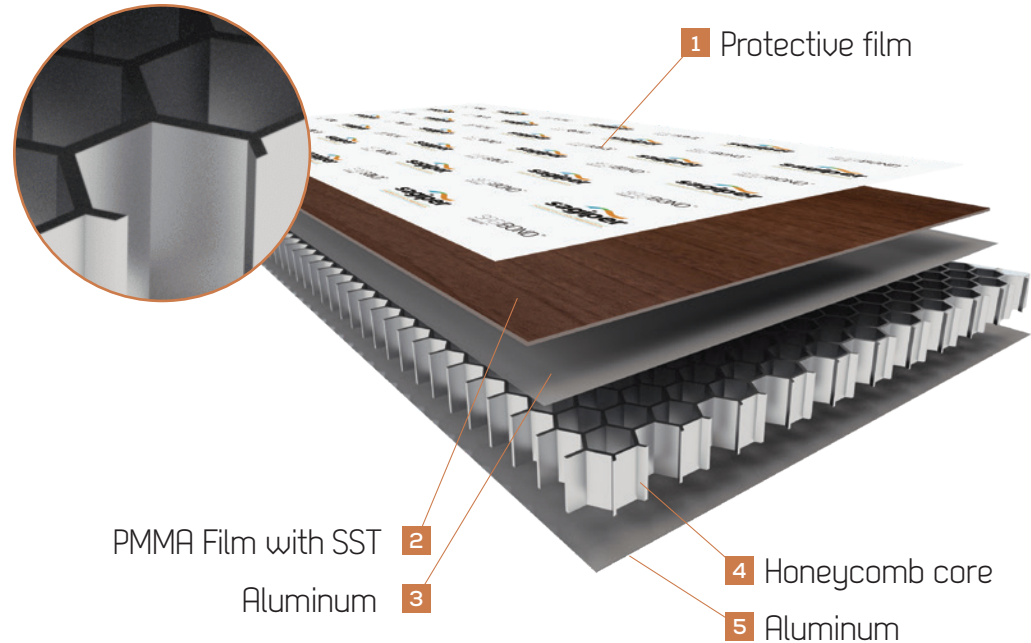
Introducing SAGIBOND™ Fireguard: our advanced composite panel, featuring two slender aluminum layers adhered to a fire-rated core. Standardized at 4mm thickness and cloaked in our true-to-life wood grain film, Fireguard offers the natural beauty and warmth of wood combined with the robustness and longevity of contemporary composites.



Panel Size:
1250mm x 5000mm (4ft x 16ft)

SAGIBOND™ HEXACORE

Discover SAGIBOND™ Hexacore: our cutting-edge aluminum honeycomb panel, meticulously enveloped in authentic woodgrain film. Tailored for architectural facades, envelopes, false ceilings, canopies, and interior cladding, Hexacore seamlessly blends strength with elegance. Available in two thickness options - 6mm and 14mm - it offers versatile solutions to bring your architectural visions to life.



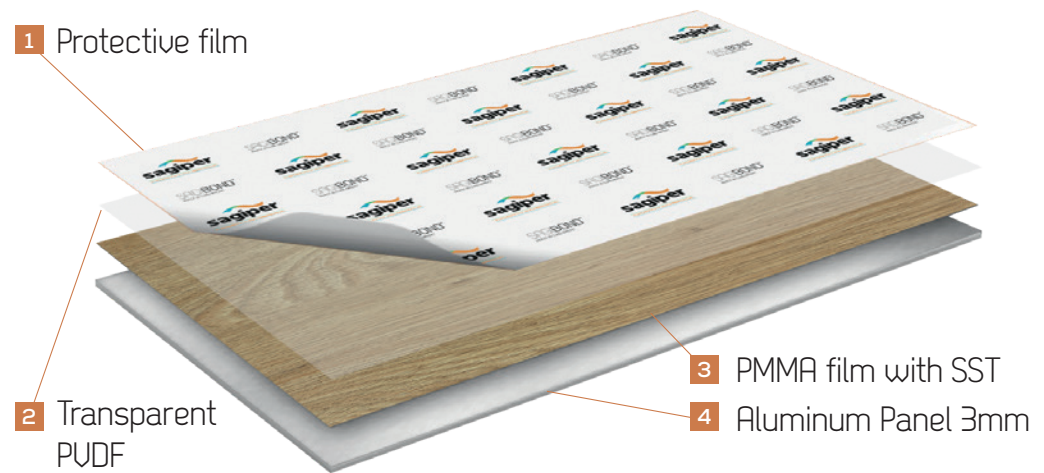
SAGIBOND™ Hexacore is designed to deliver unparalleled advantages, including:

- Exceptional lightness for easy handling and installation
- Superior insulation properties for enhanced energy efficiency
- Outstanding rigidity, ensuring structural integrity
- Impressive comprehensive strength for durability
- Environmentally friendly with 100% recyclability
- Simplified machining for effortless customization and fitting



SAGIBOND™ SLIMSHIELD NC

Introducing SAGIBOND™ Slimshield NC:
our premium solid aluminum panel, elegantly
encased in authentic woodgrain films. This
innovative product provides a completely
non-combustible solution, elevating the safety
and aesthetic of your upcoming architectural
endeavors.



Panel Size:

1250mm x 2000mm (4ft x 6.5ft) | 1250mm x 3000mm (4ft x 9.5ft)
1250mm x 4000mm (4ft x 13ft) | 1000mm x 2000mm (3ft x 6.5ft)

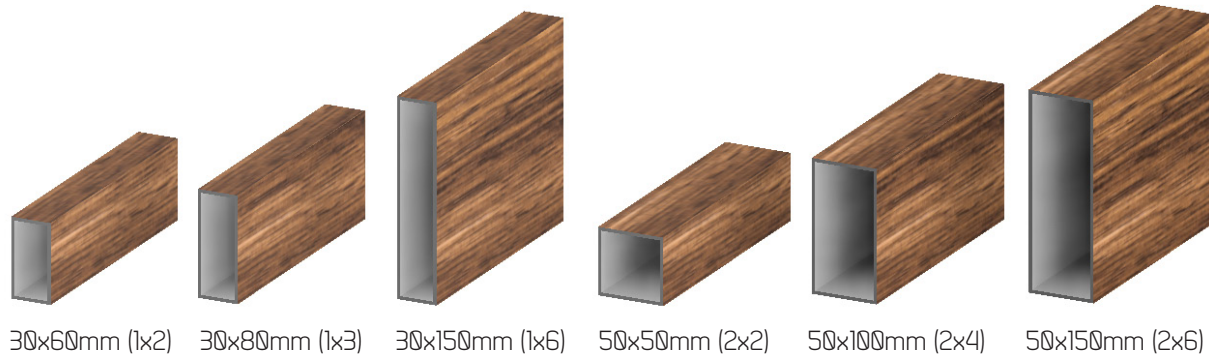




SAGIBATTEN™

Elevate your architectural designs with the perfect blend of durability and aesthetics. SAGIBATTEN™ brings to the market a revolutionary aluminum batten system that seamlessly combines the strength and lightweight properties of aluminum with the timeless elegance of wood. Each batten is meticulously wrapped in high-quality, realistic woodgrain films, offering an unparalleled natural look without the maintenance and wear issues associated with real wood.

Batten Sizes and Components

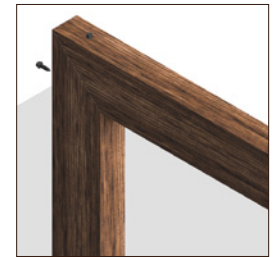
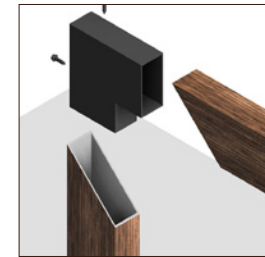


Standard Length 19'8"

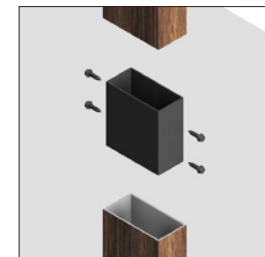
Custom Batten sizes available upon request.



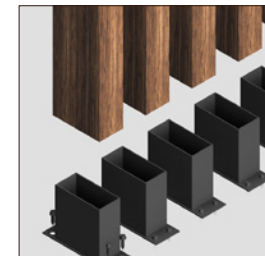
Hidden Base Plate



Inside Corner Connector



Sleeve Connector



Visible Base Plate

Why Choose SAGIBATTEN™?

- **Durability Redefined:** Crafted from premium aluminum, SAGIBATTEN™ is designed to withstand the harshest environmental conditions without succumbing to rust, decay, or warping. Enjoy the beauty of wood with the resilience of aluminum.
- **Aesthetic Versatility:** Our state-of-the-art woodgrain films are available in a wide range of textures and colors, ensuring a perfect match for every design vision. From contemporary chic to rustic charm, SAGIBATTEN™ provides the flexibility to bring any architectural concept to life.
- **Eco-friendly Innovation:** By choosing SAGIBATTEN™, you're not only opting for an aesthetically pleasing solution but also an environmentally responsible one. Our products contribute to sustainable construction practices by reducing the need for timber and offering a recyclable alternative.
- **Ease of Installation:** Engineered for simplicity and efficiency, SAGIBATTEN™'s lightweight design and intuitive installation system mean your projects can proceed faster, with less labor, reducing overall construction time and costs.
- **Maintenance-Free Longevity:** Say goodbye to the constant upkeep associated with wood. SAGIBATTEN™ offers a hassle-free solution that looks great year after year, with just minimal cleaning required.

Where Can SAGIBATTEN™ Be Used?

Ideal for both interior and exterior applications, SAGIBATTEN™ is the go-to choice for architects, designers, and builders looking to incorporate wood-like elements into their projects without compromising on durability or sustainability. From striking facade systems to sophisticated interior walls, and ceilings, SAGIBATTEN™ adds a touch of warmth and elegance to any space.

SAGIBATTEN™: Where Innovation Meets Elegance.



Introducing SAGISCREEN™: Redefining Aluminum Railing Systems and Privacy Screens

SAGISCREEN™

Merging the unparalleled durability of aluminum with the sophisticated appearance of natural wood, SAGISCREEN™ offers a versatile solution for railing systems and privacy screens. Designed to enhance both the functionality and aesthetics of your architectural projects, our product is expertly wrapped in realistic woodgrain films, delivering the look and feel of wood without the upkeep.

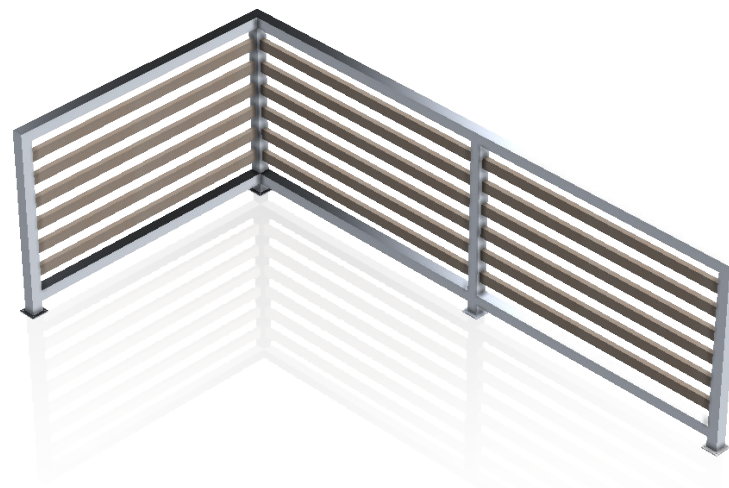


Discover the SAGISCREEN™ Collection:

Railing Systems:

Standard Railing: The SAGISCREEN™ Railing system is elegantly designed with a standard height of 43 inches, featuring woodgrain pickets that are sparsely arranged for aesthetic appeal. Offered in 5-foot sections, these railings are constructed on-site, ensuring a perfect fit that complements a wide range of architectural styles. This system marries safety with elegance, enhancing the visual appeal of any space.

Upgrade Option: Elevate your standard railing with our optional drink rail addition, wrapped in the same authentic woodgrain finish. This practical upgrade transforms your railing into a convenient spot for resting drinks and small items, enhancing usability without compromising on style. Ideal for entertaining or simply enjoying your outdoor space, the drink rail is a stylish and functional enhancement to our standard railing.

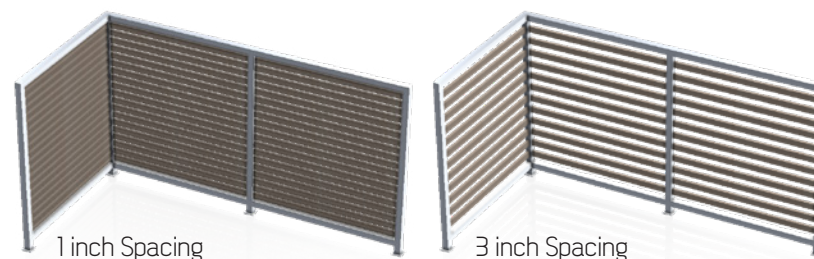


Standard Railing Option

Drink Rail Option

Privacy Screens:

Versatile Privacy: Enhance your privacy while preserving beauty with our 6-foot tall screens. Available in 5-foot wide sections, you can select from either 3-inch or 1-inch picket spacing to craft your ideal private oasis. Our screens are designed to cater to your preferences, offering elegant options for both partial visibility and complete seclusion.



1 inch Spacing

3 inch Spacing

Each option within the SAGISCREEN™ collection is designed to offer unparalleled functionality and beauty, ensuring your project benefits from the distinctive quality and elegance with SAGISCREEN™.

Why SAGISCREEN™ Stands Out

- **Aesthetic Appeal with Durability:** SAGISCREEN™ combines the beauty of natural wood with the enduring qualities of aluminum, offering a product that withstands time, weather, and wear, all while maintaining its elegant appearance.
- **Customizable Designs:** Tailor your projects with an extensive selection of woodgrain finishes that suit any style or preference. From the warm tones of traditional woods to the cool hues of contemporary designs, SAGISCREEN™ brings your creative visions to life.
- **Eco-Conscious Choice:** Embrace sustainability without compromise. SAGISCREEN™ is an environmentally friendly alternative to traditional wood, helping to conserve forests and reduce waste with its recyclable materials.
- **Simplified Installation:** Our aluminum railing systems and privacy screens are engineered for easy installation, offering a streamlined process that saves time and labor costs. The lightweight yet strong structure of SAGISCREEN™ ensures long-lasting performance with minimal maintenance..

Where to Use SAGISCREEN™

- Residential balconies, patios, and gardens
- Commercial outdoor dining areas, rooftops, and terraces
- Public parks, walkways, and communal spaces
- Anywhere privacy and aesthetics are paramount

SAGISCREEN™: Elegance, Durability, Privacy

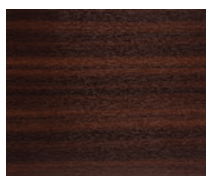


FINISHES

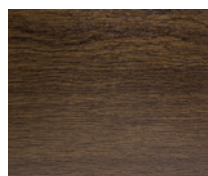
Explore Our Range of Finishes: From Woodgrain and Matte to Solid Metallic and RAL



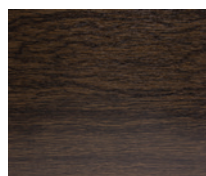
Blonde Oak
Ref 1



Port Redwood
Ref 2



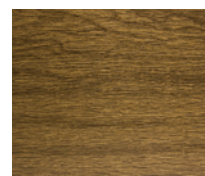
Chocolate Blackwood
Ref 3



Espresso Blackwood
Ref 4



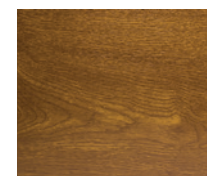
White Oak
Ref 5



Hazel Oak
Ref 6



Brazilian Redwood
Ref 7



Caramel Cedar
Ref 8



Caramel Zebrawood
Ref 9



Cherry Zebrawood
Ref 10



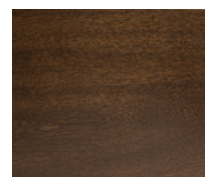
Pine Zebrawood
Ref 11



Titanium Coalwood
Ref 12



Light Maple
Ref 13



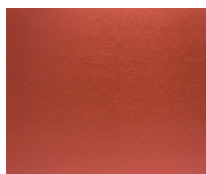
Walnut Cedar
Ref 14



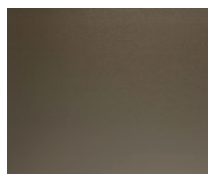
Absolute Silver
Ref 50



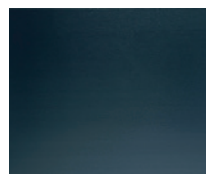
Absolute White
Ref 60



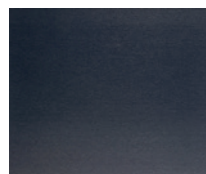
Metallic Copper
Ref 69



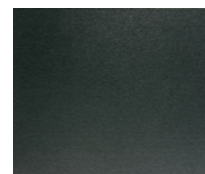
Ref 71



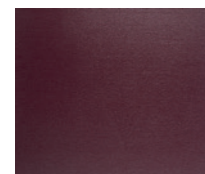
Ref 72



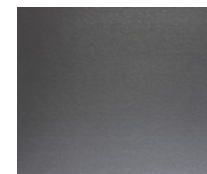
Ref 73



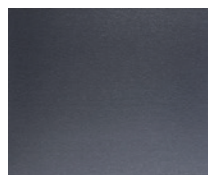
Ref 74



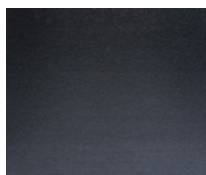
Ref 75



Ref 76



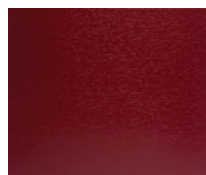
Ref 77



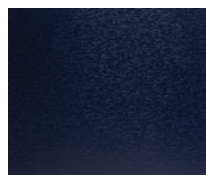
Metallic Black Ref 78



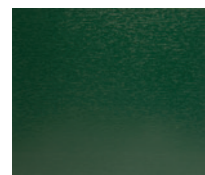
RAL 3005



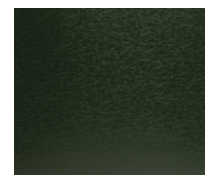
RAL 3011



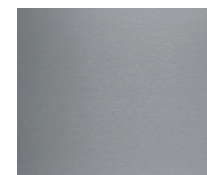
RAL 5011



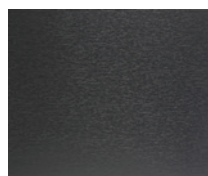
RAL 6005



RAL 6009



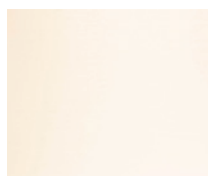
RAL 7001



RAL 7016



RAL 7035



RAL 9001



RAL 9010

Note: Solid Powder Coated Finishes are available upon request.
Note: RAL finishes available upon request.

DISCLAIMER: FINISHES ARE FOR REFERENCE ONLY.
PLEASE CONTACT OUR OFFICE TO OBTAIN PHYSICAL SAMPLES.



Knotty Maple
Ref 79



Mocha Redwood
Ref 80



ChestnutBlackwood
Ref 81



Desert Oak
Ref 82



Mountain Oak
Ref 83



Monument Oak
Ref 84



Rustic Cherry
Ref 88



Soft Cherry
Ref 89



SCANDINAVIAN ELEMENTS

Nordic design roots that provide the natural look and feel of wood.



Oslo Oak
Ref 90



Stockholm Oak
Ref 91



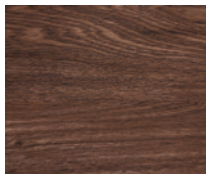
Copenhagen Oak
Ref 92



Gothenburg Oak
Ref 93



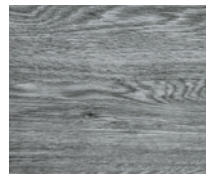
Whisky Oak
Ref 94



Nutmeg Oak
Ref 95

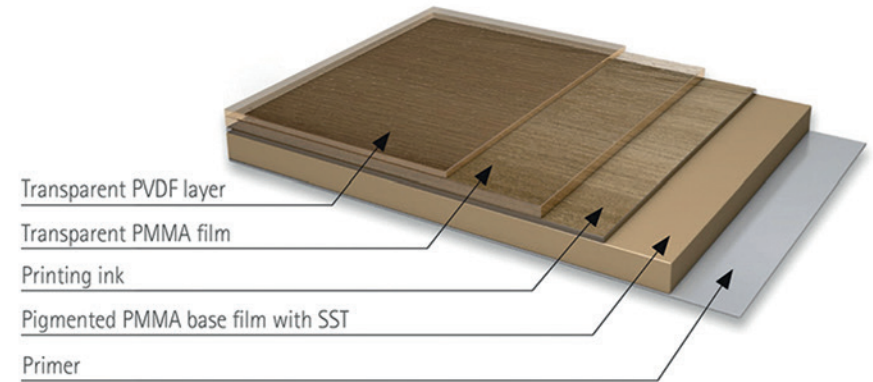


Honey Oak
Ref 97



Slate Oak
Ref 98

FILM STRUCTURE & SOLAR SHIELD TECHNOLOGY



Infrared radiation from the sun is simply reflected by SST to provide protection against excessive heat buildup resulting in cooler profiles. With SST, profiles retain their dimensional stability so that panels and trims remain secure. SST acts as a protective shield. It is reflective property safeguards the film itself, the adhesive and the profile. SST provides protection for SAGIPER's exterior film, with dark colours and wood decors enjoying the most significant benefits. SST slows down the ageing process and prolongs the life of the PVC core and construction components.

FUN FACT

Did you know our films offer an anti graffiti coating due to its low surface tension?

Note: RAL finishes available upon request.

DISCLAIMER: FINISHES ARE FOR REFERENCE ONLY.
PLEASE CONTACT OUR OFFICE TO OBTAIN PHYSICAL SAMPLES.



CANADA HQ
18505 105 Ave NW
Edmonton, AB Canada T5S 0K3

USA HQ - TAMPA
201 S County Line Road
Plant City, Florida, USA 33566

Phone: 1-780-482-3445
Fax: 1-888-890-7069
TF: 1-866-SAG-IPER (724-4737)

info@sagipernorthamerica.com
www.sagipernorthamerica.com



Discover the full range of our architectural products, including the innovative SAGIWALL™ and SAGIREU™ collections.



sagiper_na



Sagiper North America



@SagiperNA



Sagiper North America