



INVEST IN CURB APPEAL™



SIDING | SOFFIT | INTERIOR CEILINGS & WALLS

ABOUT US

The pioneers in dual wall heavy gauge architectural PVC Cladding.
Celebrating 28 years in manufacturing PVC extrusions and profile wrapping.

Born in 1994. SAGIPER emerged into the European market and revolutionized the construction and renovation industry by becoming the pioneer of high-quality dual wall PVC cladding, soffit and ceiling product lines. Since then, SAGIPER has continued its relentless pursuit in maintaining and developing its products to provide aesthetically pleasing maintenance free and modern finishing solutions for all its end users around the world.

Our product lines are designed specifically for your contemporary residential and commercial projects offering the natural look of wood and metallic aluminum finishes.

VISION

Sagiper Portugal and Sagiper North America maintain intrinsic ties that are deeply rooted in family values and mirrored in our everyday business operation. Our vision is to become an internationally recognized and trusted manufacturer of quality building materials with a reputation of integrity, honesty and first-class service to all professional levels in the buildings supply chain.

MISSION

Quality. From our family to yours.



OUR MARKETS

PRODUCTION AND SUPPLY

SAGIPER takes its mission very seriously.

To continually guarantee the quality of its products and fulfill the commitments it makes with its clients, SAGIPER production is active **24 hours per day**.

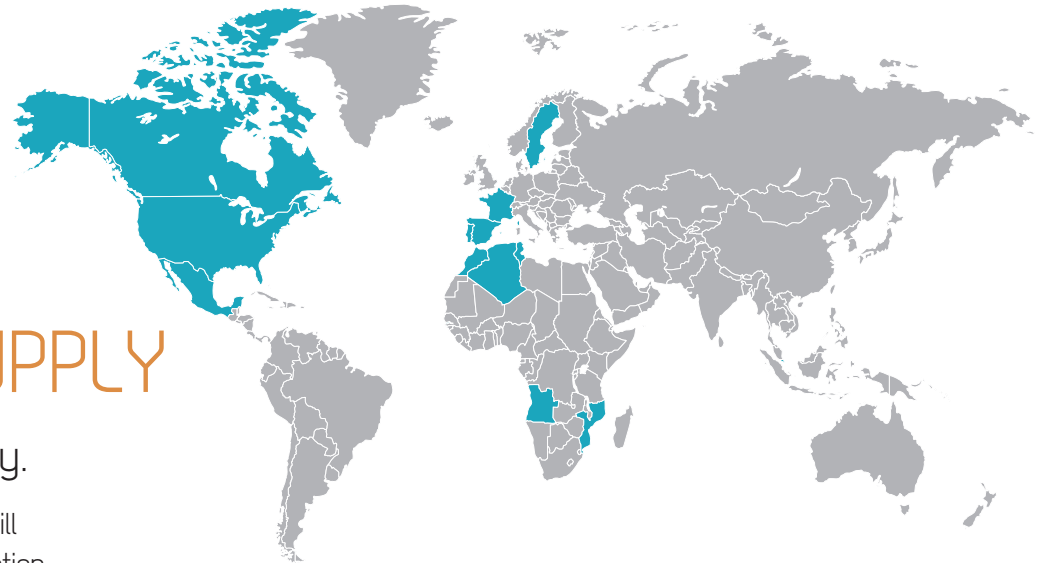
The facility relies on our family of employees, working on three shifts to maintain a continuous production of 5 to 7 days per week for the company's various product lines: Sagiwall, Sagirev and Sagicore.

SAGIPER's North American distribution center carries over half-a-million square feet of finished product to service the North American market, with a wide variety of colors and profiles ready to ship within 48 hours.

TESTING AND CERTIFICATIONS

Sagiper North America holds itself to the highest of quality standards in the market. Our products go through rigorous quality assurance and performance testing to ensure it meets the wide variety of North American certification requirements.

Visit our website
for the most up to date
testing and certification data.



SAGIWALL™

Exterior cladding that is stylish and modern

SAGIWALL provides quality cladding solutions for all types of building structures- from your family home to large scale commercial projects.

SAGIWALL has been specifically designed for exterior use providing various solutions which fulfill the most demanding requirements of the architectural and construction sectors.

Available in two profiles: SAGIWALL Channeled with 1 cm of separation and SAGIWALL U-Groove with a 4mm separation. Panels and trims come in standard 12ft and 19ft lengths.

A variety of realistic wood tones, RAL'S (European Color Chart) and metallic finishes providing a wide range of aesthetic alternatives from classic to contemporary and rustic to urban.



REF 9



REF 11



REF 60



ADVANTAGES

Specifically designed for exterior use, SAGIWALL Cladding provides several advantages:

- Easy installation
- Maintenance Free
- Resistant to humidity and temperature variations, even in the most adverse weather conditions
- Resistant to ultraviolet (UV) rays
- Minimal expansion/contraction
- Thermal Rating of 2.41
- 50-year (15 year non-prorated) warranty
- Impervious to water/molds. Perfect for coastal applications with exposure to sea spray
- Impenetrable to insects
- Impact resistance and scratch resistance
- Fire rated for North America (NFPA 285 & CAN/UL S134)
- CCMC Certification 14043-R
- Approved for Non-combustible buildings
- Standard 12ft and 19ft lengths (custom lengths available)

SAGIREV™

The ideal finishing for your stylish living space

The timeless solution for Soffit, interior ceilings and interior walls. SAGIREV has been specifically designed for interior and exterior use, providing various solutions which fulfill the most demanding requirements of the architectural and construction sectors.

Available in three profiles: SAGIREV 4" U-groove, 6" U-groove and 8" Flat. Panels and trims come in standard 12ft and 19ft lengths.

A variety of realistic wood tones, RAL'S (European Color Chart) and metallic finishes providing a wide range of aesthetic alternatives from classic to contemporary and rustic to urban.



REF 8



REF 83



ADVANTAGES

Specifically designed for interior and exterior use. SAGIREU provides several advantages:

- Easy installation
- Maintenance Free
- Resistant to humidity and temperature variations, even in the most adverse weather conditions
- Resistant to ultraviolet (UV) rays
- Minimal expansion/contraction
- 50-year (15 year non-prorated) warranty
- Impervious to water/molds. Perfect for coastal applications with exposure to sea spray
- Impenetrable to insects
- Impact and scratch resistant
- Fire rated for North America (Class A)
- Standard 12ft and 19ft lengths (custom lengths available)
- Lifetime warranty on interior use

COMMERCIAL PROJECTS



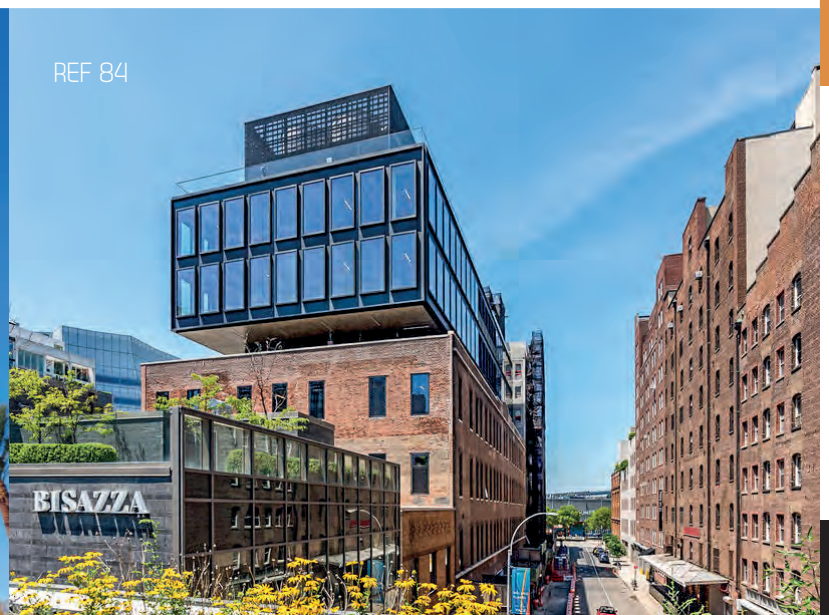
REF 78, 80, 84



REF 90



REF 13



REF 84

RESIDENTIAL PROJECTS

REF 80 & 81



REF 14, 78 & RAL 7035



REF 79



REF 9





REF 8



REF 79



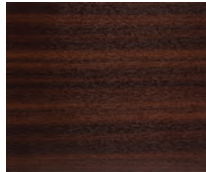
REF 79

FINISHES

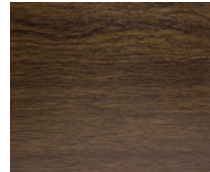
We offer a variety of finishes from woodgrain, solid metallic to RAL.



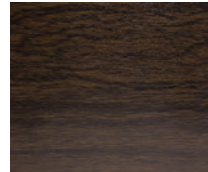
Blonde Oak
Ref 1



Port Redwood
Ref 2



Chocolate
Blackwood
Ref 3*



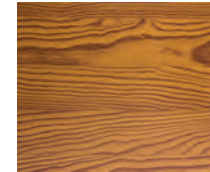
Espresso
Blackwood
Ref 4*



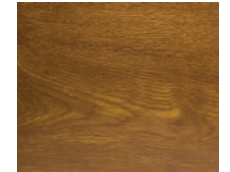
White Oak
Ref 5*



Hazel Oak
Ref 6



Brazilian
Redwood
Ref 7*



Caramel Cedar
Ref 8*



Caramel
Zebrawood
Ref 9*



Cherry
Zebrawood
Ref 10



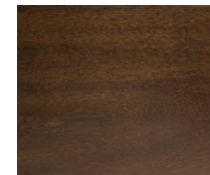
Pine
Zebrawood
Ref 11*



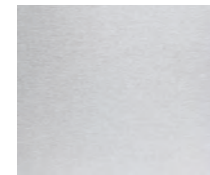
Titanium
Coalwood
Ref 12*



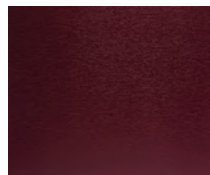
Light Maple
Ref 13



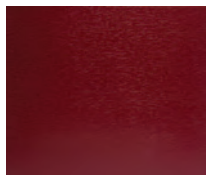
Walnut Cedar
Ref 14*



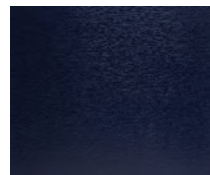
Absolute Silver
Ref 50



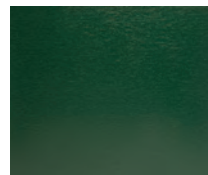
RAL 3005



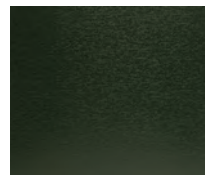
RAL 3011



RAL 5011



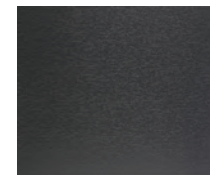
RAL 6005



RAL 6009



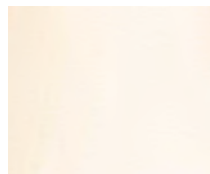
RAL 7001



RAL 7016



RAL 7035



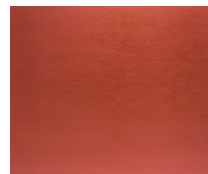
RAL 9001



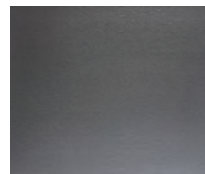
RAL 9010



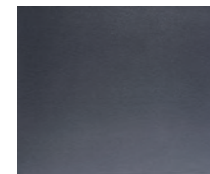
Absolute White
Ref 60*



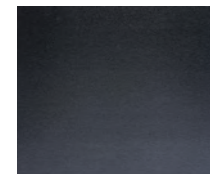
Metallic Copper
Ref 69



Ref 76



Ref 77

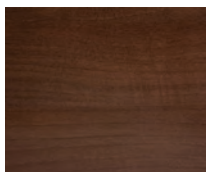


Metallic Black
Ref 78*

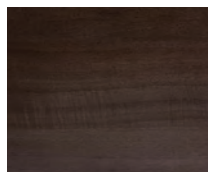
Note: * Finishes stocked in North America. Finishes are for reference only.
Obtain a physical sample. All other finishes special order. Note: RAL finishes available upon request.



Knotty Maple
Ref 79*



Mocha Redwood
Ref 80*



Chestnut
Blackwood
Ref 81*



Desert Oak
Ref 82*



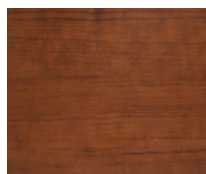
Mountain Oak
Ref 83*



Monument Oak
Ref 84*



Rustic Cherry
Ref 88*



Soft Cherry
Ref 89*



SCANDINAVIAN ELEMENTS

Nordic design roots that provide the natural look and feel of wood.

DISCLAIMER: FINISHES ARE FOR REFERENCE ONLY.
PLEASE CONTACT OUR OFFICE TO OBTAIN PHYSICAL SAMPLES.



Oslo Oak
Ref 90*



Stockholm Oak
Ref 91*



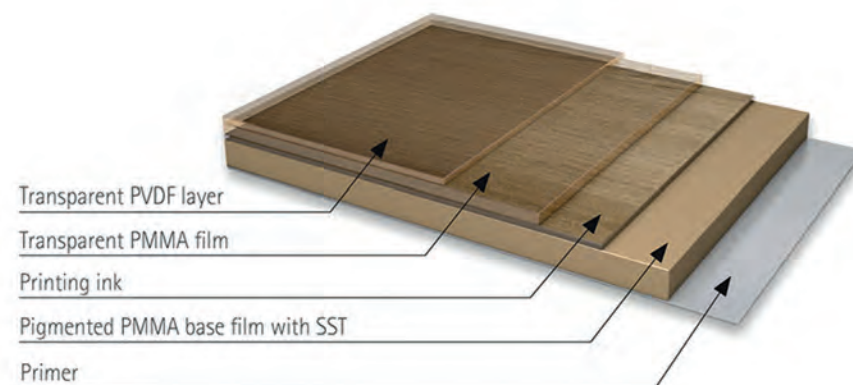
Copenhagen Oak
Ref 92*



Gothenburg Oak
Ref 93*

Note: * Finishes stocked in North America.
All other finishes special order. Note: RAL finishes available upon request.

FILM STRUCTURE & SOLAR SHIELD TECHNOLOGY



Infrared radiation from the sun is simply reflected by SST to provide protection against excessive heat buildup resulting in cooler profiles. With SST, profiles retain their dimensional stability so that panels and trims remain secure. SST acts as a protective shield. Its reflective property safeguards the film itself, the adhesive and the profile.

SST provides protection for SAGIPER's exterior film, with dark colours and wood decors enjoying the most significant benefits. SST slows down the ageing process and prolongs the life of the PVC core and construction components.

FUN FACT

Did you know our films offer an anti graffiti coating due to its low surface tension?

SAGIWALL™

EXTERIOR SIDING



01.

CHANNELED



02.

U-GROOVE



03.



04.



06.



07.



08.



03.



04.



05.

01. SAGIWALL™ CHANNEL 6" PROFILE

02. SAGIWALL™ U-GROOVE 6" PROFILE

03. ALUMINUM L TRIM 6" X 1.5"

04. ALUMINUM L TRIM 3.5" X 1.5"

05. ALUMINUM L TRIM 2" X 1.5"

06. ALUMINUM J-MOLD 1.5"

07. ALUMINUM TERMINATING J-MOLD

08. ALUMINUM H-MOLD 2.5"

09. ALUMINUM OUTSIDE CORNER 1.5" X 1.5"

10. ALUMINUM STARTER STRIP



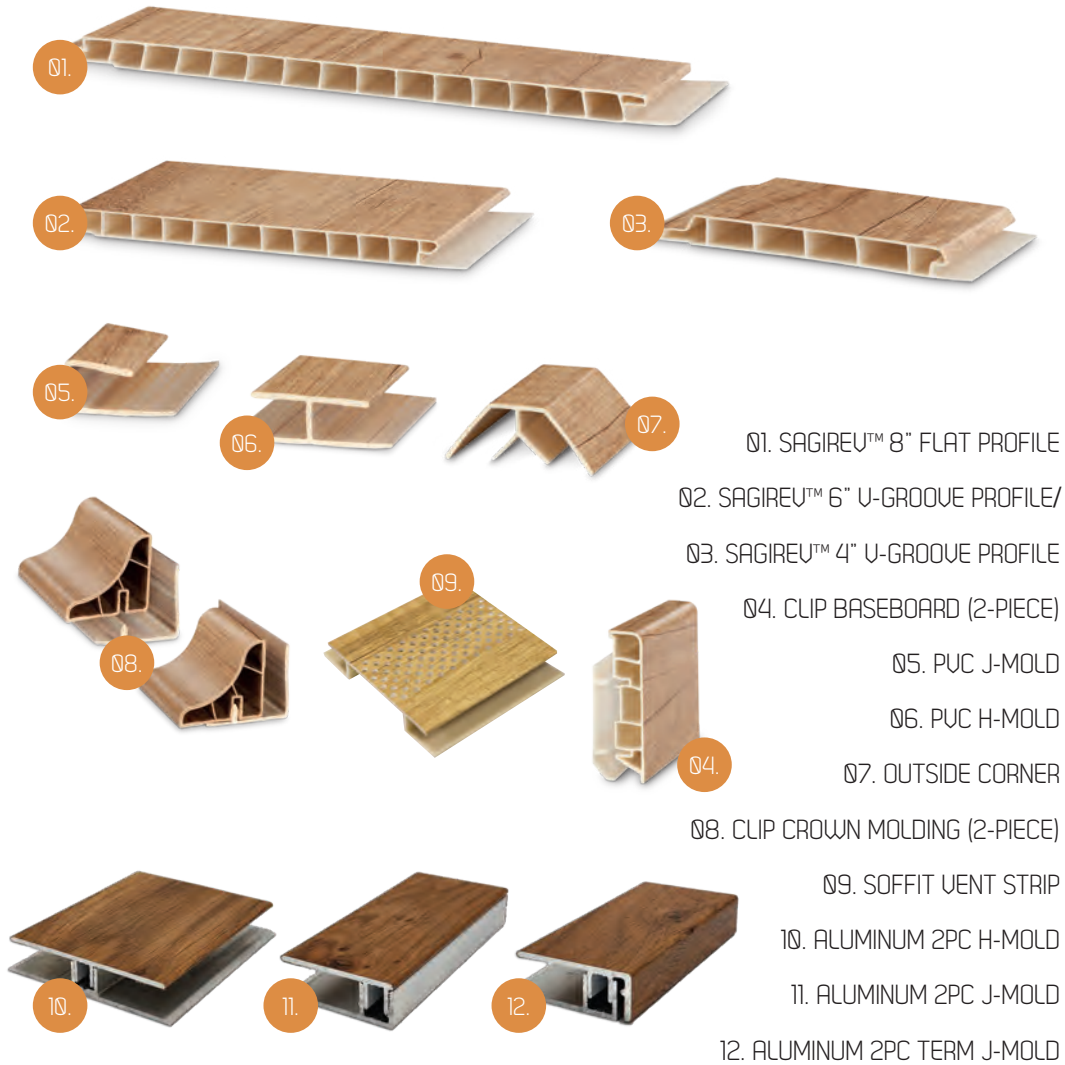
09.



10.



SOFFIT / INTERIOR CEILINGS / INTERIOR WALLS



SAGIREV™





HEAD OFFICE
18505 105 Ave NW
Edmonton, AB Canada
T5S 0K3

Phone: 1-780-482-3445
Fax: 1-888-890-7069
TF: 1-866-SAG-IPER (724-4737)

info@sagipernorthamerica.com
www.sagipernorthamerica.com



Scan here
for a digital
brochure

BROCHURE



sagiper_na



Sagiper North America



@SagiperNA



Sagiper North America